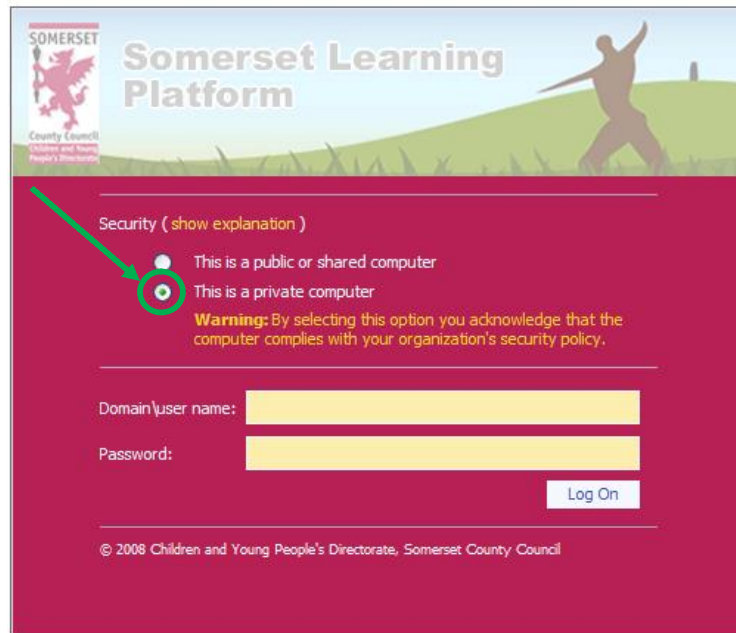




## Helpful Tips for Somerset Learning Platform (SLP)

### Log in for longer

If you are on a secure PC - either at home or logged on to your school network – select "This is a private computer" on the log-on screen.

The image shows the login interface for the Somerset Learning Platform. At the top, there is a banner with the Somerset County Council logo and the text 'Somerset Learning Platform'. Below the banner, there is a 'Security ( show explanation )' section with two radio button options: 'This is a public or shared computer' and 'This is a private computer'. The 'This is a private computer' option is selected and circled in green. A warning message states: 'Warning: By selecting this option you acknowledge that the computer complies with your organization's security policy.' Below the security options are input fields for 'Domain \user name:' and 'Password:', followed by a 'Log On' button. At the bottom, there is a copyright notice: '© 2008 Children and Young People's Directorate, Somerset County Council'.

This will log your computer on to SLP for 60 minutes. Remember SLP doesn't save automatically, **so always save your work as you type, every couple of minutes or so**. If you finish working on SLP or you leave your computer during this time you should always Sign Out by clicking "Sign Out" in the top right-hand corner of the screen.



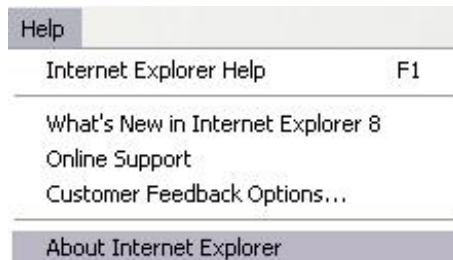
Remember if you select "This is a public or shared computer" not "This is a private computer". Your session will automatically time-out if you do not change pages or save your work within a 10 minute period, **even if you are typing in information. So remember to save your work at least every 5 minutes.**



## Helpful Tips for Somerset Learning Platform (SLP)

### **Make Your Internet Browser SLP Friendly (Home or Personal Laptop Only)**

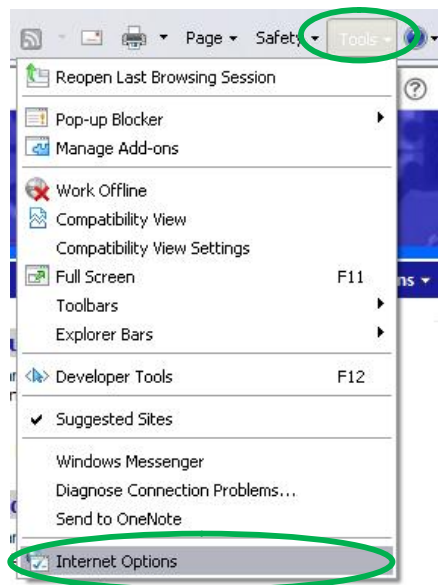
SLP is best viewed in Internet Explorer (version 7 or greater, we use 8 in school). To find out the version you are using, open Internet Explorer then click "Help" then "About Internet Explorer".



Also Internet Explorer has built-in security which protects your computer on the Internet by blocking websites from automatically installing software on your computer, but as we want SLP to run we need to allow it.

To do this we need to add SLP to the Trusted Sites:

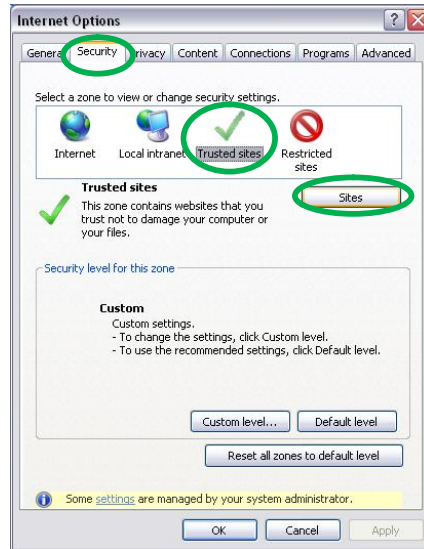
Open Internet Explorer then click Tools > Internet Options



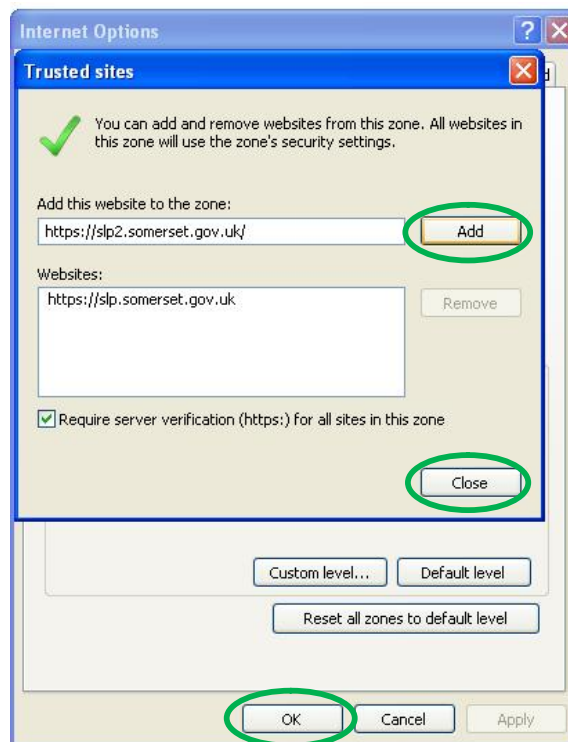


## Helpful Tips for Somerset Learning Platform (SLP)

Select the Security tab then highlight the Trusted Sites icon then Select Sites.



Now add the web address <https://slp.somerset.gov.uk> and <https://slp2.somerset.gov.uk> to the list.



Click cancel then select OK to accept your changes.